

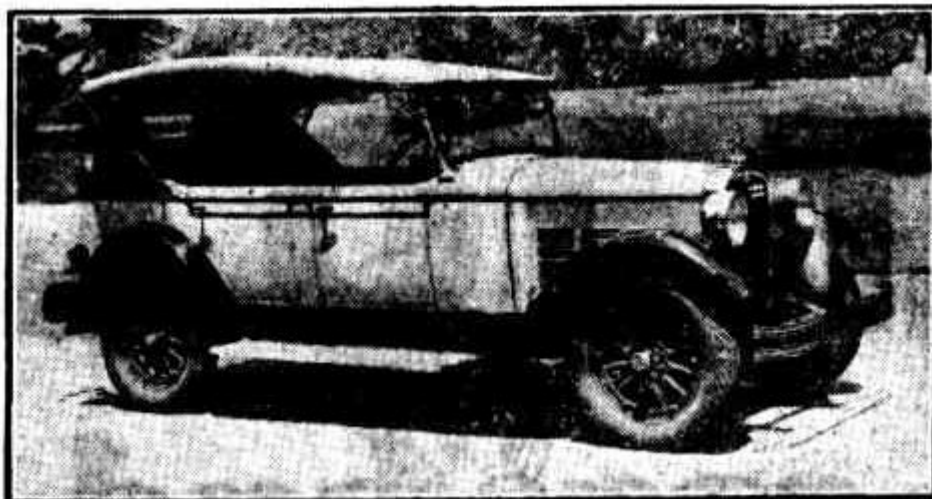
MOTORING NEWS

CHRISTMAS CRUISE.

ROYAL MOTOR YACHT CLUB.

The Royal Motor Yacht Club of New South Wales will hold another extended ocean, harbour, and river cruise at Christmas-time, during the course of which 250 miles will be covered, and members of the club will participate in three regattas.

The organisation of this cruise will be very thorough, as the club has the experience gained in the successful similar fixture last year as a guide. Members of the parent club and its two branches, Newcastle and Broken Bay, will take part, and a very large fleet should assemble in Broken Bay, where all the boats will meet. The main fleet will assemble in Rose Bay, and sail from there in two divisions on the morning of December 24 for Broken Bay. To facilitate rapid movement the boats which wish to proceed at more than nine miles an hour will sail under the leadership of the commodore of the Royal Motor Yacht Club, Mr. S. P. Doyle, in Miramar at 6.30 a.m., while the slower division will be led by Mr. A. C. Cooke, commodore of the Broken Bay branch, in the Modwena, an hour later. On arrival in Broken Bay the entire fleet will anchor as far as possible in parallel lines. The Broken Bay branch section of the fleet will joint the main fleet according to special instructions, while the Newcastle



THE DODGE SENIOR TOURING CAR.

Latest addition to the six cylinder Dodge line. It has seating accommodation for five or possibly six passengers.

branch vessels will take their instructions on joining the fleet from their own commodore, Mr. J. C. Reid.

Owing to the early hour of departure from Rose Bay it has been arranged that ladies who are participating in the cruise may go

rose Bay it has been arranged that ladies who are participating in the cruise may go overland to Newport, where arrangements for their transport to the Basin will be made.

On December 25, B division of the fleet, the slower boats, will leave at 9 a.m. for Wiseman's Ferry, while the faster division will leave at the Basin until 10.30 a.m. ha-

the slower boats, will leave Wiseman's Ferry, while the faster division will remain at the Basin until 10.30 a.m. before sailing to join the early starters. Both divisions are scheduled to reach Wiseman's Ferry at 4.30 p.m. They will then anchor near the shore west of the township, as far as possible in straight lines. The Royal Motor Yacht Club's supply vessel will take up a position nearby, and supplies will be available immediately.

During the evening the commodore will entertain the party with motion pictures from the stern of the Miramar.

On Monday, Boxing Day, December 26, the fleet will move out in midstream, 400 yards from the shore, and anchor at 9 a.m., when members will participate in the Royal Motor Yacht Club's second Hawkesbury regatta.

Those desiring to participate in the various events set down must have their entries in the hands of the race secretaries on or before December 16. The events are: Local handicap skiff race; general handicap for locally owned motor boats; handicap for all speed boats, 12 m.p.h. and over, for the 1927 Wiseman's Cup; outboard speed boat handicap; and open handicap for pulling dinghies.

After lunch an aquaplaning display will be given, followed by "man overboard" race, handicap for all club boats under 12 m.p.h., speed boat handicap race, all boats over 12 m.p.h., hydroplane handicap speed boat race. In the evening the regatta ball will be held in the Memorial Hall, Windsor.

On Tuesday, December 27, the fleet will sail in two divisions for the Colo River, anchoring for the night by Reiby Farm. On the following day a dinghy picnic has been arranged to the Upper Colo River, returning in time to sail for Wiseman's Ferry at 3 p.m.

On Thursday the fleet will sail for Berowra Creek (30 miles), where the night will be spent. During the evening a further exhibition of moving pictures will be given from the stern of the Miramar.

Next day all vessels will leave for Refuge Bay at 10 a.m., where preparatory arrangements will be made to participate in the Pittwater regatta.

On Saturday the fleet will assemble at 9.30 a.m. at Scotland Island, and there "dress ship" preparatory to participating in the Pittwater regatta programme of six events. After the regatta the fleet will remain at mooring in order to allow all members to attend the Pittwater regatta dinner.

Sunday will be free, and on the following day, Monday, New Year's Day, special racing events of the Broken Bay club branch will be held, in which all club boats are eligible to compete. The events will be a handicap hydroplane race; cruiser handicap, "B" class; "A" class speed boat handicap for 12 m.p.h.; general handicap, all boats; "C" class speed boat handicap.

On Tuesday, January 3, the fleet will sail for Port Jackson, where vessels will disband off Steel Point, proceeding to their own moorings.

SPECIAL INFORMATION.

Speed boats may be shipped to Wiseman's Ferry by arrangement with the Hawkesbury Steamship Co., and the steamer Erringhi will be available for this purpose.

The work of supplying the fleet with supplies has been placed in the hands of Mr. R. J. Cameron, Wiseman's Ferry, who will have his supply boat anchored with the fleet daily, while at Berowra limited supplies may be obtained; however, members intending to participate in the cruise are advised to stock up from the supply ship on Thursday, December 29.

Boat owners who have no accommodation on their boats can erect temporary accommodation at Wiseman's Ferry, The Basin, and in the Broken Bay clubhouse grounds at Newport.

Members are particularly advised that on

port. Members are particularly advised that on entering or leaving the Inner Basin vessels should proceed at slowest speed possible to maintain steering way, as any greater speed washes down the walls of the channel, and offenders are liable to a heavy penalty.

Fleet captains will fly a special burgee on their vessels, being a red and white pennant, divided horizontally, and members will carry out fleet captains' orders, conveyed to them on behalf of division commanders.

All vessels of the fleet must fly the burgee of the Royal Motor Yacht Club of N.S.W. at mainmast and red ensign aft, unless admiralty warrant entitles owner to fly the blue ensign of R.M.Y.C.

The following have signified their intention of participating:—Miramar (Commodore Stuart F. Doyle), Modwena (Branch Commodore A. C. Cooke), Moami (J. C. Reid, branch commodore, Newcastle), Nomad (Rear-Commodore Bradford Potter), Opal (P. A. McIntosh), Idle-a-While II. (W. J. Copeland), Koonya (W. G. Dalgarno), Zoe (H. Read), Rodrick (D. Lorimer), Miss Marie (Stuart F. Doyle), Miss Pritchard (Pritchard Bros.), Fortuna (ex-Commodore Weymouth), Dolores (G. N. King), Trixie (B. Paul), Warrigal (H. C. M. Garling), Moth (E. P. Wilks), Isis (Ken. Wride), Baby Miramar (Stuart F. Doyle), Wintie (Hugh Ward), Redwing (Otto Camphin), Seattle (R. M. MacDougall), Carinya (Dr. C. L. S. McIntosh), 960 (R. Hamilton), Bimbo (F. Saunders), Banyandah (Branch Rear-Commodore T. B. Nossiter), Cincinnati (Captain H. C. Mills), Tanda (R. Prevost), Alkoelle (C. Jacobs), Pollyanna (R. Strelitz), Miss Johnson (J. F. Jackson), Elvina (Branch Vice-Commodore H. J. Fitzpatrick, Broken Bay), Liberty (W. P. Renshaw), Albatross (F. Winn), Cuthia (N. H. Blade), Banyandah (S. P. Blundell), Miss Newport (Ted Light), Dolphin (W. A. Passnu), Alpha (D. A. Douglas), Lady Jean (H. A. Figtree).